

Catalog 2023

[www.tat3d.com](http://www.tat3d.com)



## why 3d target

The visual process that acquires a 3D image accordingly to the action that follows becomes a result close to real-life situations dynamics, and also extremely useful in operational environments.

The reaction takes place at a target 3D with the identification of a target that represents the human being and the motion around it, as well as the acquisition of the 3D target leads to the choice where to strike transmitting sensations and emotions which are extremely close to reality.

TAT3D is a completely modular system with full of accessories designed to recreate realistic scenarios.





**...EXPERIENCE**

# TAT3D GROUP

The design of a Tat3d targets, arises from a complex process of optical scans carried out on real bodies to respect correct proportions.

A subsequent reverse engineering process combined with a cad design, carried out a high quality project .

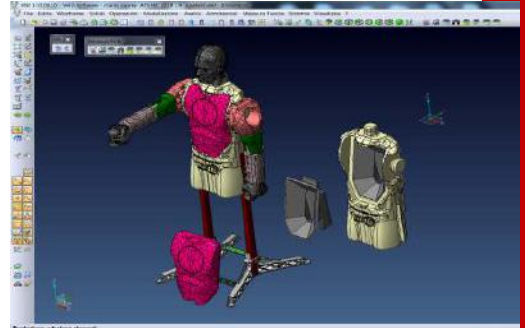


The moulds are all made directly by Tat3d.

The birth of the new Tat3d factory in Florida- Jacksonville allows us to produce our targets in complete autonomy; with multiple advantages in terms of high quality combined with a low final cost.

In conclusion Tat3d is completely autonomous , from design to production, this also allows us to satisfy even special request or to develop particular needs on commission.

**....the final product**



**SINGLE 3D TARGET WITHOUT ANY STRUCTURE OR METALLIC PART  
SINGLE TARGET REALLY USABLE ANYWHERE.**

Rotating head, with vertical position or horizontal for lying position

Replaceable chest made with higher density compound for longer life. with internal human organs

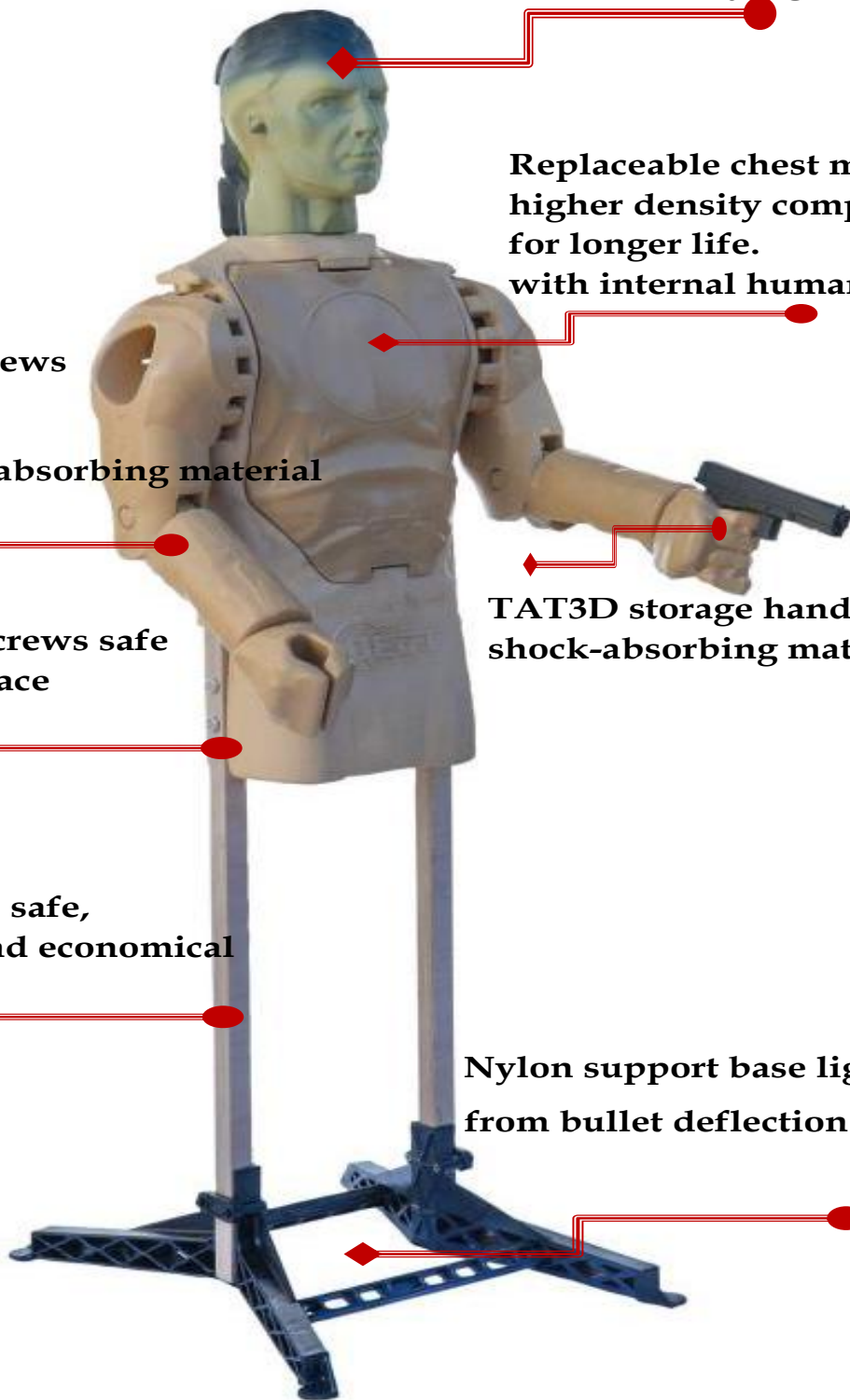
Joints without screws or other parts not all made of shock-absorbing material

double Nylon screws safe and easy to replace

TAT3D storage hand all in shock-absorbing material

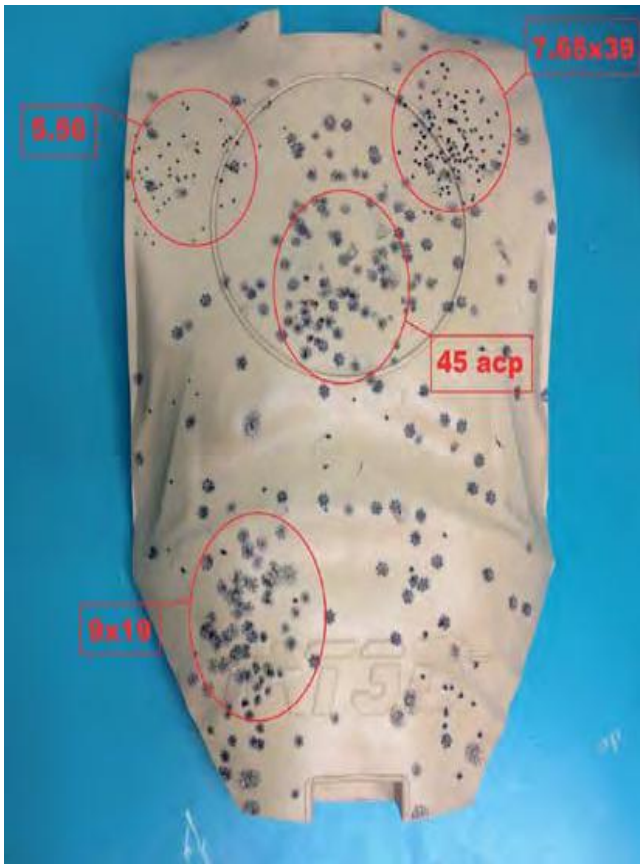
wooden supports safe, easy to replace and economical

Nylon support base light and safe from bullet deflection hazards.

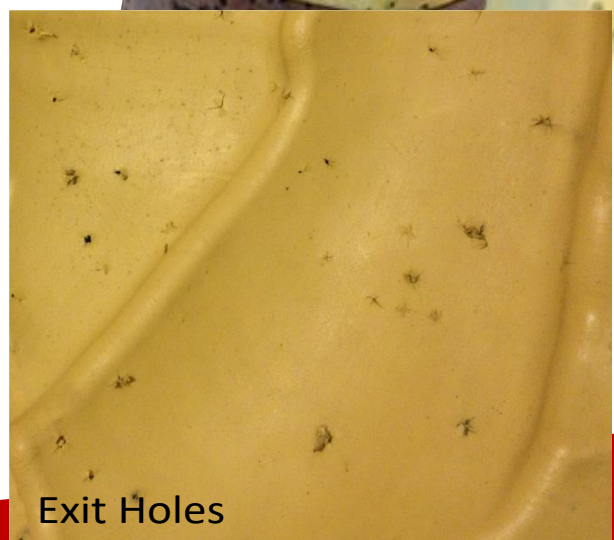


15,000 hits ! .. and after ...  
replace only worn parts

Our lenses are all made from a particular compound. The shots penetrate beyond the target and the special material they are made of closes ensuring a long life. Furthermore, our targets are made in several pieces, all interlocking without the use of screws or structural metal parts; this guarantees absolute safety from rebounds and long duration of use.



Entrance Holes



Exit Holes

**ROB Cod. R1**

Inexpensive three-dimensional target  
Human silhouette body with frontal carton  
holder system for shots and accessories-object  
holder hands.

Particular feature: light and  
versatile, the absence of  
metal allows it to be used  
anywhere.

Every component of the  
body is made of shock  
absorbing material;  
replaceable and safe to use  
in the shooting range.

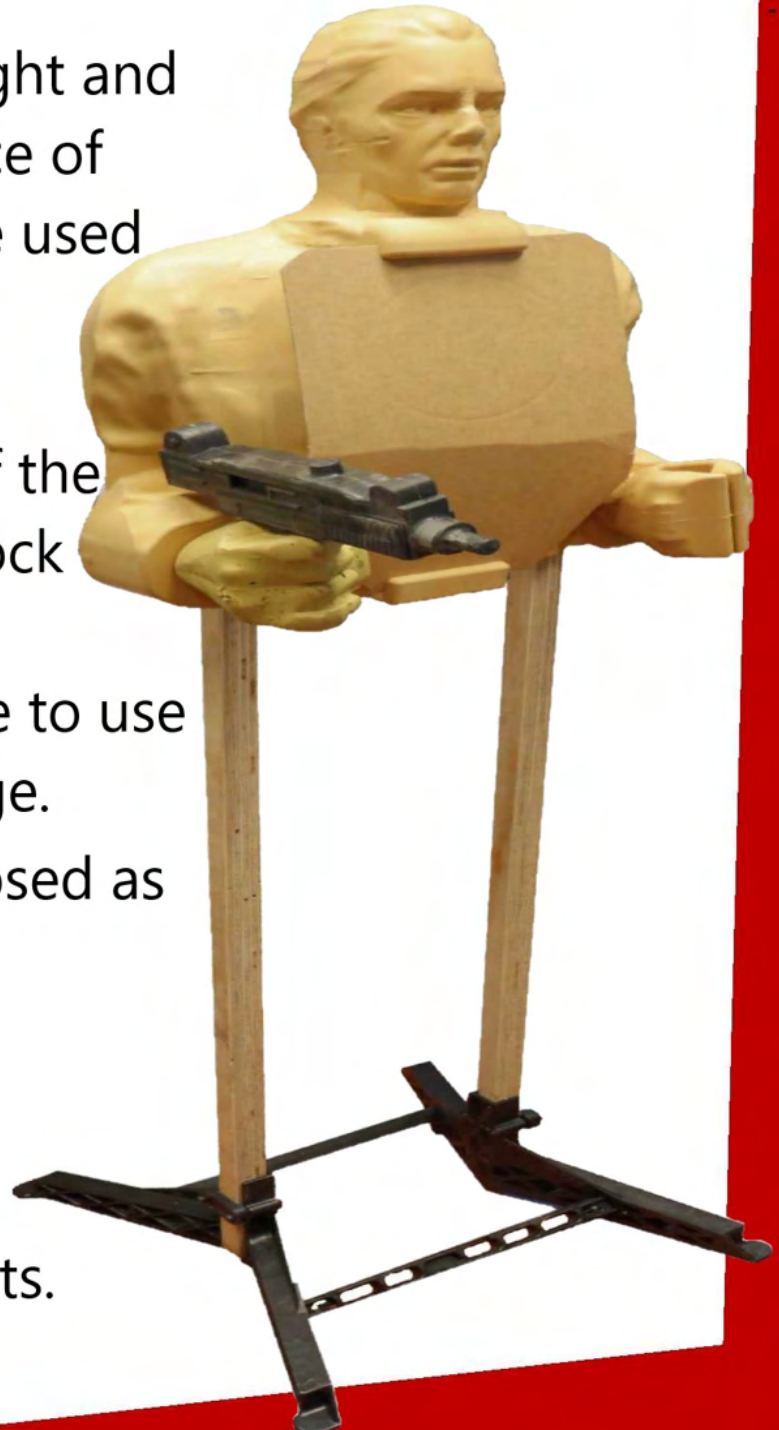
Basic version composed as  
follows:

Rob body

Gun and knife

Support base

Wooden support slats.



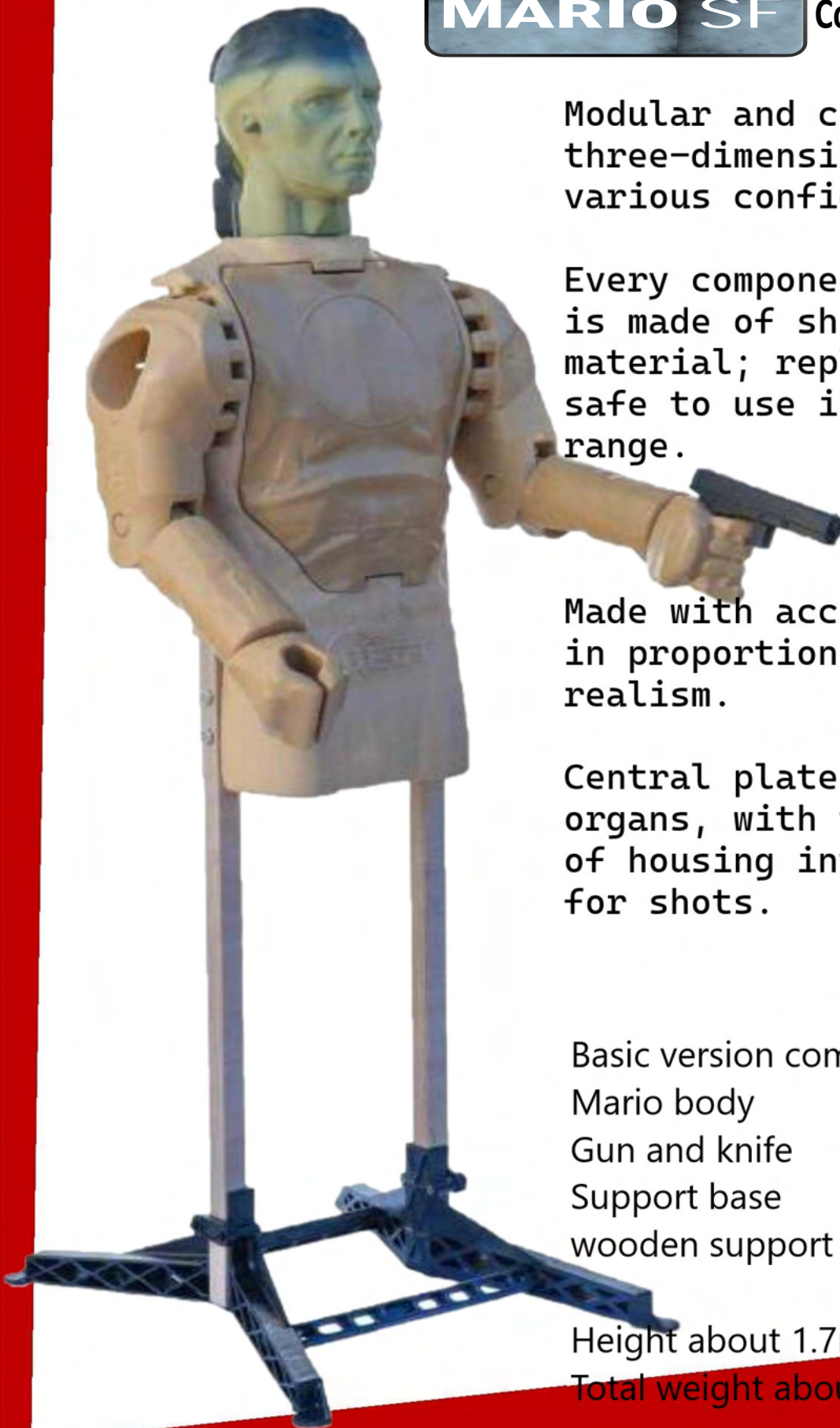
Height about 1.75m

Total weight about 6kg.



THE BEST 3D TARGET EVER.  
UNIQUE AND PATENTED.

**MARIO SF** Cod. M1



Modular and configurable three-dimensional target in various configurations.

Every component of the body is made of shock absorbing material; replaceable and safe to use in the shooting range.

Made with accurate precision in proportions for great realism.

Central plate with internal organs, with the possibility of housing internal cartons for shots.

Basic version composed as follows:  
Mario body  
Gun and knife  
Support base  
wooden support slats.

Height about 1.7m  
Total weight about 15kg.



**3D TARGET BORN AND PERFECT FOR KILLING HOUSES.**

**MARIO HC** Cod. MHC

The internal plate in Ardox 500 allows to stop shots by internally retaining fragmentation residues and the lead of fragmentation gases, also partially containing shot deflections.

**UNIQUE AND PATENTED.**

Basic version composed as follows:

Mario body

Internal plate with Ardox500 frame.

Gun and knife

Support base

And support wooden slats.

Height about 1.7m

Total weight about 20kg.



SF daughter collapsible target.  
possibility of working fixed or falling if hit.

**Cod. Mfd**

Basic version composed as follows:

Mario body

Support plate for balance  
adjustment in nylon.

Inner plate in PET.

Gun and knife

Support base

Wooden support slats.



Height about 1.7m

Total weight about 17kg.



# SPECIFIC TARGET FOR FX-SIMUNITION

**LUIGI FX**

**Cod. L1**

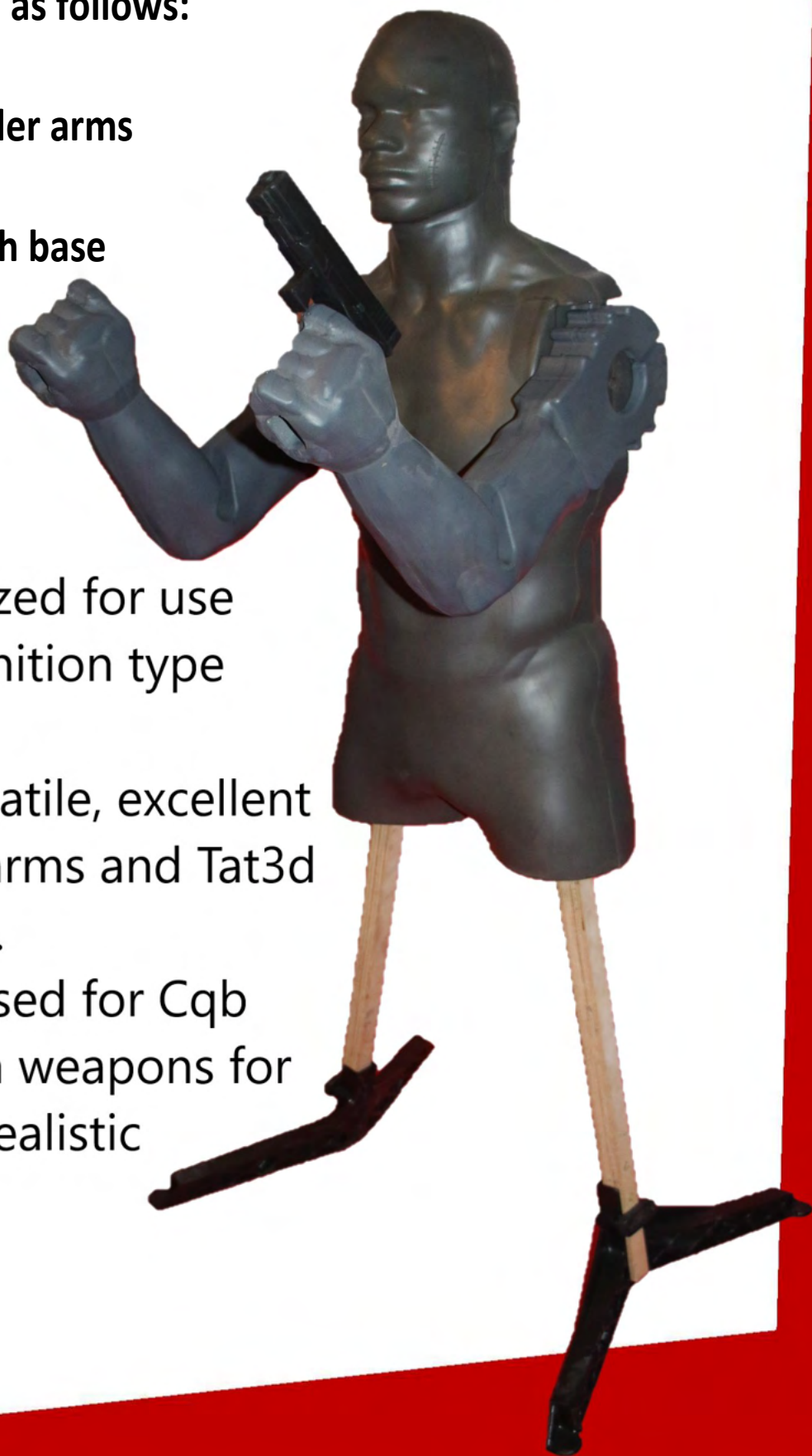
**Target composed as follows:**

**FEDO fx body**

**Tat3d object holder arms**

**Gun simulacrum**

**wooden slats with base**



target optimized for use  
with FX-simulation type  
shells.

light and versatile, excellent  
with flexible arms and Tat3d  
object holder.

can also be used for Cqb  
exercises with weapons for  
increasingly realistic  
training

# MARIO BULLETS TRAP

Cod. MBT



Top target of our Mario line it has a large Bullets trap made in Ardox 500. This system allows to convey all the blows received inside the trap, crushing them and making them fall into a metal box placed behind.

Three-dimensional target from the Mario series intended for sniper use

ARDOX500 metal parts

Flip-up head

Central gong plate



Pedestal system with variable angles for use even on sloping terrain.





## Steel target TRIPOD

Available sizes (in Hardox500):

GT8RO Round, 8"  
 GT10RO Round, 10"  
 GT12RO Round, 12"  
 GT18RO Round, 18"  
 GT18RE Rectangular, 12"x 24"  
 GT18RE Rectangular, 18 x 24

GT18SQ Square, 18"  
 GT12SQ Square 12"

GT01KIT Gong Support Kit

Code: GT01



it consists of three tubes and a fixing body.  
 this system allows a quick assembly and easy transportation  
 furthermore, being able to adjust the position of the rods,  
 it can be leveled on sloping ground allowing easy use anywhere.  
 the targets can be positioned on the central rod by means of a system  
 which leaves their movement free, creating the sound effect.  
 body and target made of Ardox 500 and all other parts cone of  
 standard trade, thus allowing in case of damage a  
 replacement ficle available everywhere

## Steel target GONG

Code: GT02

Support system and target of various shapes and sizes in Ardox 500.  
 Peculiarity of the system is the extreme versatility: it is light and easy to transport, being completely removable.  
 All the potentially hit parts are easy to replace and can be found anywhere.  
 The two "grippers" that make up the composite structure are variable in the angle of the 4 support rods; this allows easy use in any not-plane terrain.  
 It comes with rubber target support straps, which have a lifelong even if hit several times and easily replaced.  
 Optionally you can opt for the wooden rod or even with a tube, also this solution is designed for.  
 Easily facilitate replacement with easily available material.  
 It is also possible to hang multiple targets or even the three-dimensional TAT3D shapes.



## base for paper targets

**Cod. B2**

Description :

Made complete in NYLON

Very light 3.5kg

Available in different sizes for each type of traditional target



**Cod. B1**

Description :

Very light 3.5kg

spare bases for TAT3D targets



**Cod. FH**

## Flat Head in collapsible steel

Flat head in collapsible steel that can be used on the entire Mario series.  
Usable whether it gets up or fixed when falling.  
Made in Ardox 500.







# FEDO

Cod. F1



## Hand to hand training system

Dummy for martial arts and close combat operative techniques.

it can be hit anywhere with shots of all kinds.

also suitable for training in the use of the stick and for disarmament techniques.

arma with variable position.

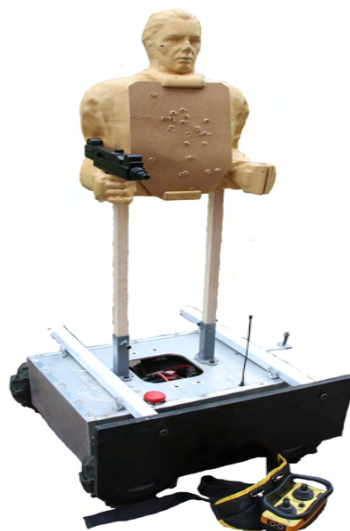
when hit it moves the body and arms with

oscillating movements to give a realistic feeling

of movement and reaction



# Radio controlled training system TAT3D REX



**100% made in Italy**  
**weight: 55 kg - carrying capacity: 40kg**  
**maximun speed: 13km/h**  
**radio controller - manual or programmablr handling**

**Cod.TX1**

# FIELD BULLET TRAP



## Cod. BT

Our field Bullets trap made in Ardox 500 is resistant up to 12.7 caliber (not AP), designed to be disassembled, tran-assembled with 2 people in about 15 minuts. The system, with useful shooting size of 2m (height) for 1.5 ( width), can indifferently be used with our 3D targets or with normal paper or cardboard targets, thanks to the magnets kit designed for this purpose ( optional).

It rests on 4 bases that can be leveled and adapted to the ground.

The ogives, after impact with steel, shatter and fall into collectors on the bottom of the system that collect also the 100% of the lead, reducing the environmental impact of the activity near to zero.

Moreover, several stations can be joined and linked.

# simulated weapons



**Cod.W1**  
Simulated knife in rubber



**Cod.W2**  
Simulated Glock in rubber



**Cod.W3**  
Simulated Uzi in rubber



**Cod.W4**  
Simulated AK in rubber



**Cod.W5**  
Set objets in rubber



## Cod.P2

Replacement plate in Ardox 500 for use on bullet trap of the realistic target body.



## Cod.C1

Internal cardboard shaped to be inserted into our targets to detect the projectile entry point.  
Can be used on all our TAT3D target product line.  
Sold in 50-sheet packs



## Cod.C2

Shaped cardboard to be inserted on the flat target head (H4) or behind the normal head (H1) to detect the projectile entry point.  
Sold in 50-sheet packs.



## Cod.T1

Central target chest with integrated internal organ display at the rear to determine accuracy and lethality .  
Made in the same material as our targets and usable across the ENTIRE TAT3D product line.



## heads

### Cod.H1

Made in the same material as the realistic targets and usable only on our Mario series targets.  
It can be used with cartons to detect the shot or with an Ardox plate.



### Cod.H2

#### HEAD WOMAN

Made in the same material as our targets that can only be used on our Mario series.  
Ideal for hostage scenarios.



### Cod.H3

#### HEAD MAN





**NATO CAGE - AG 941**



**GS07F087GA**  
**Schedule**  
Contract



**OBSIMA**  
technology

of Peccini Adriano  
Via Campagna, 13  
21040 Sumirago (VA)  
ITALY  
Phone: +39 0331 909961  
Mail: [info@tat3d.com](mailto:info@tat3d.com)  
Web page: [www.tat3d.com](http://www.tat3d.com)