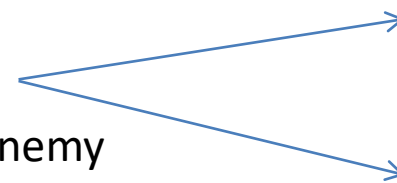


# Inflatable tactical military decoys



- models of arms and military equipment
- simulators and reflectors that deceive the enemy
- unrecognizable from the original
- 19 years of experience, development with armed forces



For asymmetric training

To protect equipment and personnel

# Inflatable tactical military decoys



## References:

- the U.S. Air Force  
<https://govtribe.com/contract/award/fa561316p8049>
- the French Air Force



# Inflatable targets for live training



The advantages of live exercises:

- improve precision training for ground forces
- especially important when the enemy uses asymmetric style of warfare or in urban area setting

# Inflatable vs. original



Optical visibility	Yes	Yes
Radar visibility	Yes	Yes
IR visibility	Yes	No
Mobility	Yes	No
Cost	Low	Low
Environmental impact	Low	High
Armament type	Any	Limited

# Inflatable vs. original



Optical visibility	Yes	Yes
Radar visibility	Yes	Yes
IR visibility	Yes	Yes
Mobility	Yes	Yes
Cost	Low	High
Environmental impact	Low	High
Armament type	Any	Limited

# Inflatable vs. hard structure decoy



Optical visibility	Yes	Yes
Radar visibility	Yes	Possible
IR visibility	Yes	Possible
Mobility	Yes	Medium
Cost	Low	Low
Environmental impact	Low	Low
Armament type	Any	Limited

# Advantages of inflatable decoys



- **Low cost and high mobility**

Armaments and their service cost more than inflatable decoys. Decoys are mobile and require less qualification of the operator. Their service is inexpensive and place for storage is less than 1m<sup>3</sup> per unit. To move inflattech tank only 2 persons and a small car are sufficient.

- **Wide range of target models**

Any kind of inflatable decoy model can be designed and produced in 6 months, e.g. tank Armata, Type-96A or missile launcher Shahab-3.

- **IR and radar signatures**

Inflatech decoy features all signatures management systems.

- **Reducing the environmental impact**

Lightweight fabric inflatable targets do not affect the environment. Inflatable targets can be safely placed within the urban environment. Especially useful for asymmetric warfare training.

# Weight of Abrams M1 decoy



Transport bag with decoy	~ 60 kg
Separate petrol/electric blower	~ 25/12 kg
Metal anchors and frames (optional)	~ 25 kg
<b>Total</b>	<b>~ 100 kg</b>





# Characteristics based on R&D



- Probability of recognition as a real object from air > 80% from more than 5km distance
- Granularity (level of details):
  - Optical ~0,2m
  - Thermal ~0.6m
  - Radars ~4m
- Wind speed stability: up to 15 m/s (gust 25 m/s)
- Time of deployment in 2 persons: 10 min.
- Time of packing in 2 persons: 20 min.

# 3D simulation



# 3D simulation



TOR M1 (SA-15)  
weight: 100 kg; volume: 1m3  
inflating time: 13minutes, deflating. 20min;  
granularity:  
- optical: ~0.2m  
- radar: ~4m  
- IR (thermal): ~0.6m



Inflatable Military Decoys  
<http://www.inflatechdecoy.com/>



Inflatable Military Decoys  
<http://www.inflatechdecoy.com/>

# 3D simulation



## OSA 9k33 (SA-8)

weight: 90 kg; volume: 1m3

inflating time: 10minutes, deflating. 20min;

granularity:

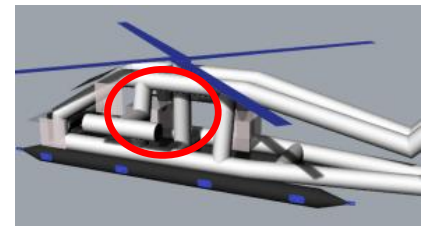
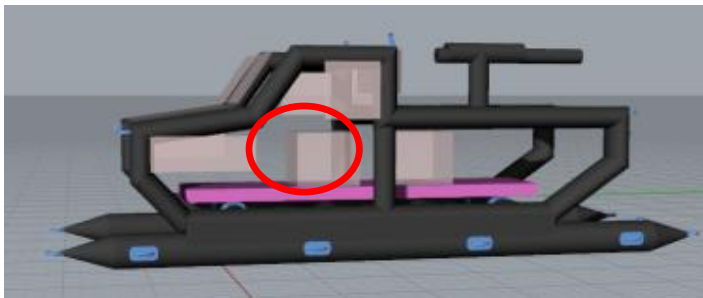
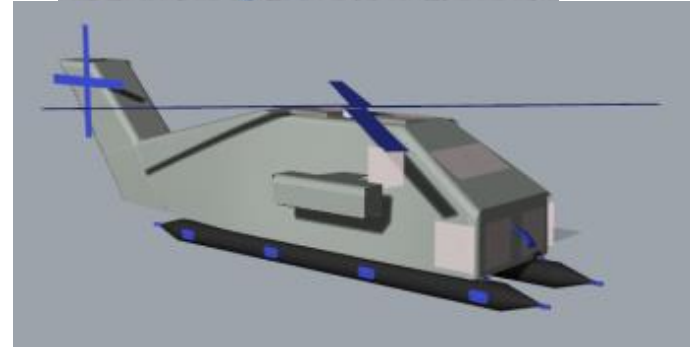
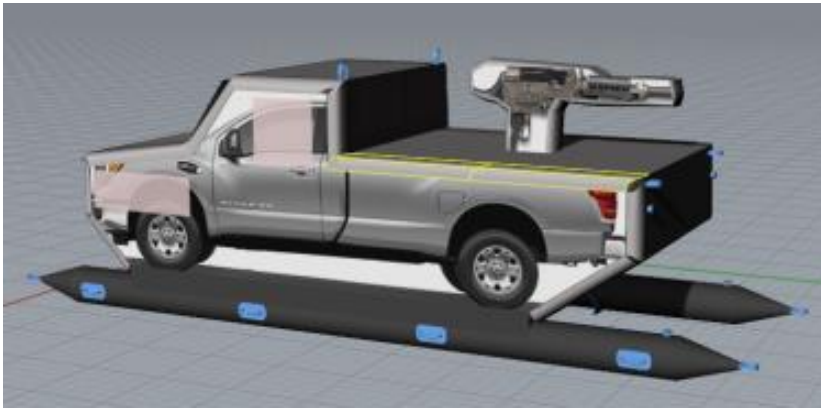
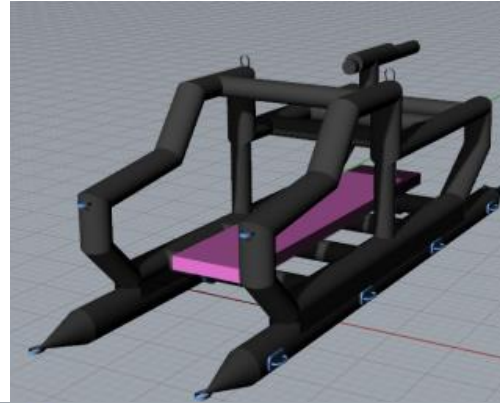
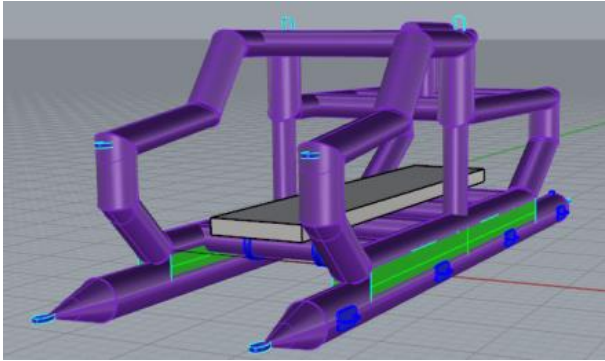
- optical: ~0.2m
- radar: ~4m
- IR (thermal): ~0.6m



# 3D simulation



# Navy targets



# Made in the Czech Republic



All used materials for Inflatech decoys are made in the Czech Republic under the auspices of Czech Ministry of Defence.

- Inflatech uses high quality certified fabric
- There is no risk of electronical tracking
- We can offer lab testing to validate the signatures of the decoy
  - *The Military Technical Institute is a state enterprise established by the Ministry of Defence of the Czech Republic in order to provide strategic deliveries and services needed to guarantee Czech Republic's defence and security, as well as to fulfil its obligations associated with Czech Republic's NATO and EU memberships.*



# The solution



- All decoys are produced according to customer needs. Detailed characteristics are discussed during contract preparation.
- Optimal technical results are achieved if the customer provides detailed portraits (Optical /3D, infrared, radio) of real weapons.
- Close collaboration between INFLATECH and the customer ensures the best project outcome.

## Typical set



- Transport bag with decoy;
- Electric, diesel or petrol blower;
- Spare parts and additional components;
- Instructions and product data sheet;



# Contacts



## Production facility:

Malšovice 54, 40502 Děčín – Malšovice, Czech Republic  
Email: [info@inflatechdecoy.com](mailto:info@inflatechdecoy.com)

## Prague office:

Washingtonova 25,  
110 00 Praha 1, Czech Republic  
(Defence and Security Industry Association of the Czech Republic, DSIA)

## CEO:

Mr. Vojtěch Fresser  
Tel: +420 736 612 948  
Email: [vf@inflatech.cz](mailto:vf@inflatech.cz)

