



Compact & Ruggedized Long Range Surveillance Camera System

# CORE LRSCS



powered by **FUJIFILM** SX800



## **The high-performance housing CORE LRSCS for defense and security forces integrates the long-range surveillance camera system SX800 from FUJIFILM**

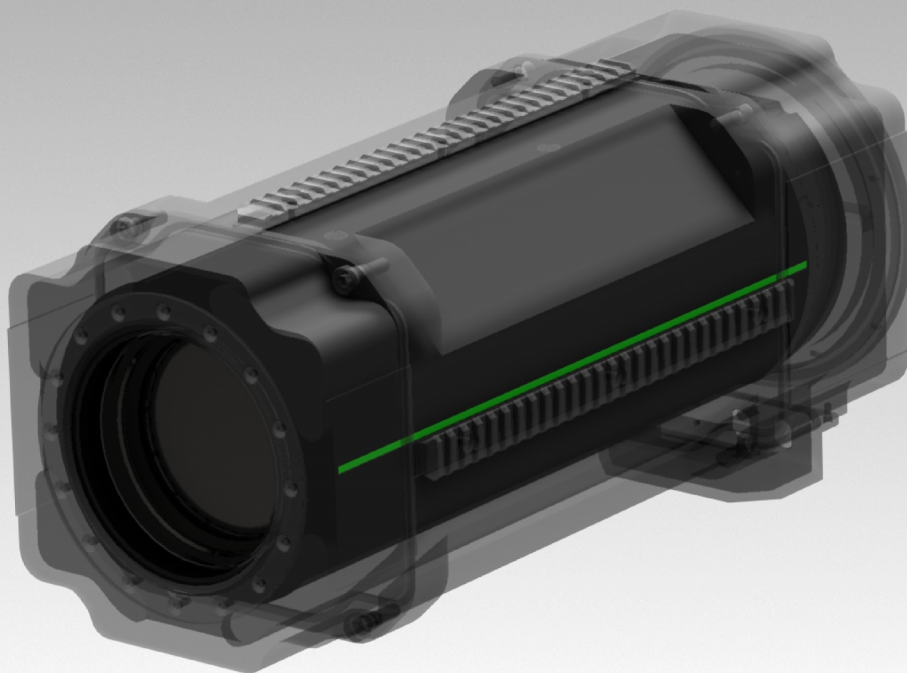
ZIPPERMAST GmbH transferred the Fujifilm SX800 commercial of the shelf (COTS) component into a MIL spec rated, long range surveillance camera system, withstanding the harsh requirements of military and security force applications.

The Fujifilm SX800 is a long range surveillance camera system with integrated 40x optical zoom, high-performance image stabilization and high speed autofocus system and is to be considered as one of the market leading camera systems. *(For detailed technical data of the SX800 please see the attached flyer)*

The housing developed by ZIPPERMAST GmbH includes a damped mounting, a heating and other technical solutions to support the SX800 withstanding the harsh environmental and handling conditions when being utilized by forces in the defense and police.

The housing offers many ways to add dedicated accessories, as each mission requires different setups. The modularity enables the user to add different functionalities to the system e.g. to transmit data, control the accessories or to use different power sources.

ZIPPERMAST GmbH developed a housing as well as unique equipment and accessories which - added to the outstanding technical performance of the FUJIFILM SX800 – create a great long range surveillance camera system for challenging users.

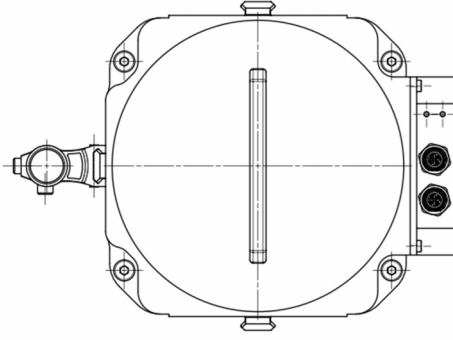
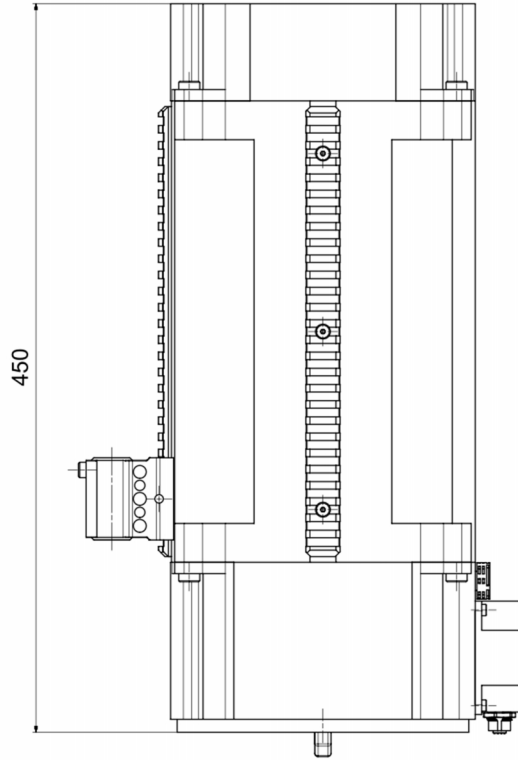
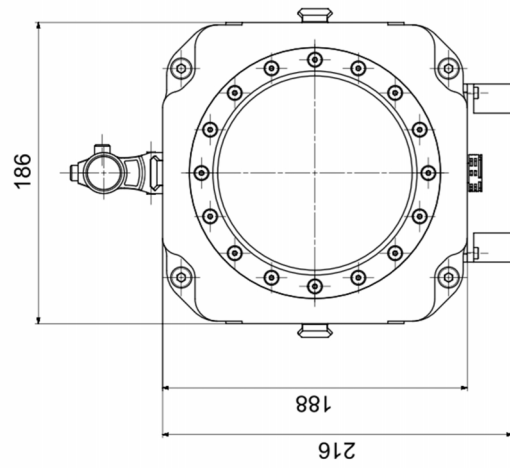




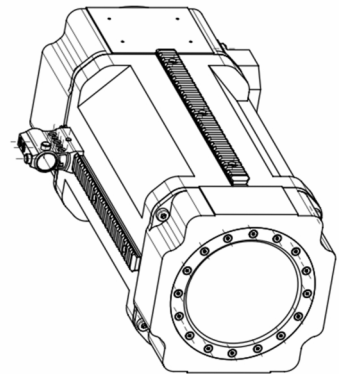
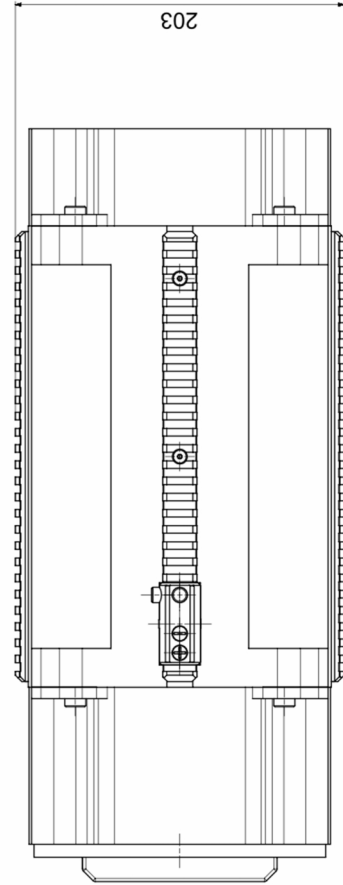
## Features of the CORE LRSCS

- Machined aluminium housing
- Optional front glasses up to transparent ceramic
- Picatinny rails for equipment (option)
- Integrated heating (low temperature range – 35°C)
- IP68 rated
- Damped mounting of camera in housing
- MIL connectors
- All LEDs dimmable to zero
- Wide range Input voltage 12 - 28VDC (option)
- Set of modules: (option)
  - LAN 2 radio module
  - LAN switch module
  - LAN 2 fibreoptic
  - Power distribution box - 12 - 28VDC IN – 5, 12, 24VDC OUT
  - LAN I/O module (digital inputs / outputs)
  - LAN / analogue module
  - GPS / GLONASS / GALILEO module
  - High precision alignment module
- Lens hood
- Kill flash filter
- Standard and custom mounts (for tripods and PTU's)
- Several cables for standard power-sources and equipment





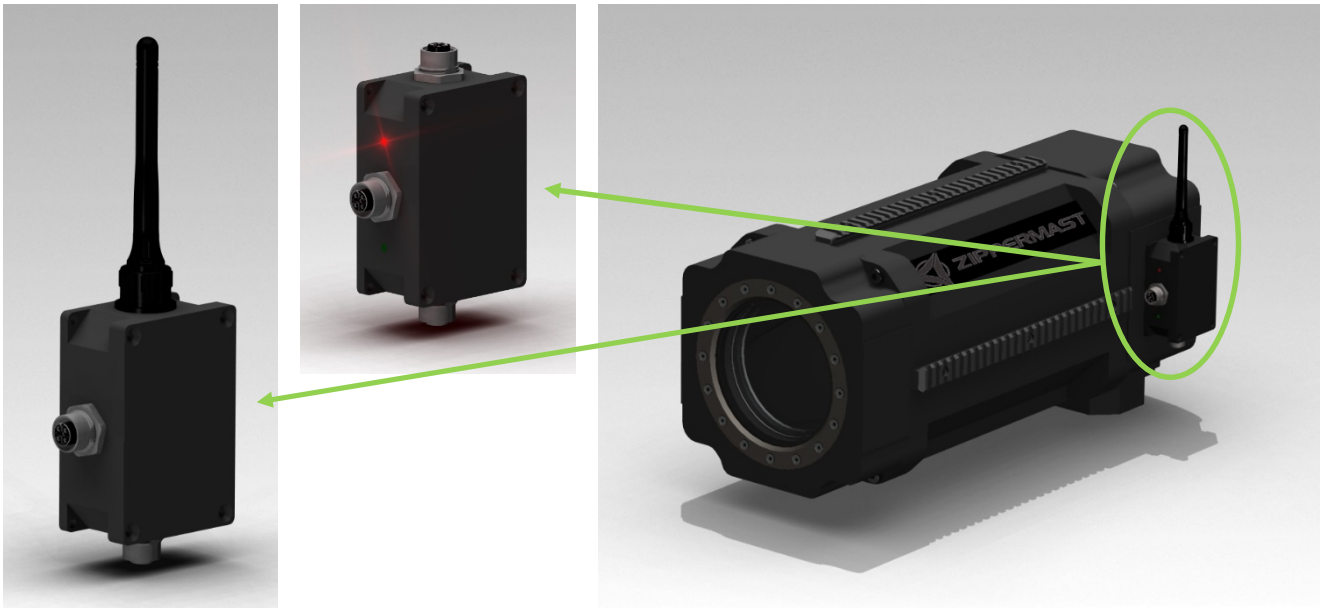
**Technical data:**  
Dimensions in mm





## Several function modules

ZIPPERMSAT GmbH offers several modules which can easily be mounted to the housing and are “plug and play” for the user. Nearly any other module can be developed and produced depending on the user’s specific demands.



### Available modules (extract):

- Power distribution module → IN 24 VDC – OUT 5VDC (USB) – 12 VDC – 24VDC
- Interface modules → LAN to serial interface (RS), LAN to fibreoptic
- Radio modules → WIFI, tactical radio, mesh
- I/O module digital → LAN / 4 x digital input – 4 x digital output
- I/O module analogue → LAN / 4 x digital input or output – 4 x analogue input or output
- PTU module → For control of pan tilt units
- GNSS module → GPS – GLONASS – GALILEO
- Meteorological module → Weather data

### Picatinny rails for MIL standard equipment

- Laser rangefinder
- Laser designator
- Lights (illumination)
- Sights and scopes
- High sensitivity microphone



## Specific equipment for the CORE LRSCS

Lens hood, used as lens hood and as protection for the lens during transportation



## Kill flash filter

Honeycomb filter for the lens to protect against visual detection







## Connectors

ZIPPERMAST GmbH uses MIL grade connectors (standard are ODU AMC series) to make sure that compactness, ruggedness and reliability are continued through out the entire CORE LRSCS system. The ODU connectors are available as ODU AMC® Push-Pull or ODU AMC® Break-Away as the customer prefers his own “connectivity”.



Picture © ODU GmbH & Co. KG

## Cables

ZIPPERMAST GmbH offers many cables including needed connectors, so the user has the full range of cables for every configuration. Listed are some of the available cables:

Cable\_Power\_BB2590 - Cable\_Power\_Gladius - Cable\_Power\_PM\_G3\_SFC  
Cable\_Power\_Pinplug - Cable\_Power\_OpenEnd - Cable\_Power\_Cigarette\_lighter

Cable\_Support\_LED\_Illumination - Cable\_Support\_Laser Range Finder -  
Cable\_Support\_Laser Designator - Cable\_Support\_IR\_Illumination

Cable\_LAN\_RJ45 - Cable\_LAN\_MIL - Cable\_LAN\_OpenEnd -  
FibreOpticCable\_Video

Cable\_COM\_MIL\_Radio - LAN WIFI Router MIL

6

ZIPPERMAST GmbH



## Several mountings

In order to mount the CORE LRSCS professionally, ZIPPERMAST GmbH offers different mounting plates, which are easy adaptable. For customer specific needs ZIPPERMAST GmbH designs and produces the most suitable solution for it's customers.

ZIPPERMAST GmbH offers a wide range on integration services when it comes to integrate your CORE LRSCS onto nearly any camera carrier, incl. PTU's, masts, tripods and other mounting solutions.



## Integration

CORE LRSCS integrated via PTU on a ZM\_10-060 (left picture) and via an PTU on a tripod.





## Contact

ZIPPERMAST GmbH  
Thumseestrasse 44  
83435 Bad Reichenhall  
Germany

Telefon: +49 (0)8651 700 7 50  
Fax: +49 (0)8651 700 7 51

Internet: [www.zippermast.de](http://www.zippermast.de)  
E-Mail: [contact@zippermast.de](mailto:contact@zippermast.de)

©ZIPPERMAST GmbH, Version 1.1 EN

